



**DON BOSCO INSTITUTE OF MANAGEMENT STUDIES  
AND COMPUTER APPLICATIONS**  
Kumbalagodu, Bengaluru, Karnataka - 560074



**BEST PRACTICES – 2**  
**Industrial Visits: 2021-22**





# DON BOSCO INSTITUTE OF MANAGEMENT STUDIES AND COMPUTER APPLICATIONS

Kumbalagodu, Bengaluru, Karnataka - 560074



## **1. Title of the Practice:**

Industrial Visits 2021-22

## **2. Objective of the Practice:**

The objective of the industrial visit is to go outside academics, as an industrial visits provides students a practical outlook of the work place and gives a chance to the students to learn practically through interactions, the working methods and employment practices.

## **3. The Context:**

The institute has followed the suggestion made by the IQAC, the Department of Commerce and Management conduct industrial visits to several industries in the academic year. Classroom teaching-learning process becomes significant and real only when students get an interface in order to know the functions of the industry. DBIMSCA believes learning is effective when improved with programmes which focus and also negotiate beyond the syllabus and curriculum. Industrial Visits are an efficient way of revealing students to the nature of corporate and industrial practices.

## **4. The Practice**

The Institution had taken the initiative to implement this practice. In every Academic year, industrial visits are organized by the Institution for various Departments.

- Students got practical knowledge regarding soap manufacturing process and distribution of soap products at Karnataka Soaps and Detergents Limited (KSDL).
- Industrial Visit to Channaptna Craft Park, a grant the students a great opportunity to interact with industries and know more about industrial environment includes production process, packaging, marketing, and channel of distribution.

**5. Evidence of success:**

<b>Sl. No.</b>	<b>Industry Name</b>	<b>Date</b>	<b>No. of Students</b>
<b>1</b>	Karnataka Soaps and Detergents Limited (KSDL)	06/04/2022	100
<b>2</b>	Channapatna Craft Park	28/03/2022	78
<b>3</b>	Channapatna Craft Park	22/02/2022	25
<b>4</b>	Karnataka Soaps and Detergents Limited (KSDL)	18/02/2022	59

Don Bosco Institute of Management Studies and  
Computer Application

Kumbalagodu, Mysore road, Bangalore - 560074  
Department of Commerce and Management

# INDUSTRIAL VISIT REPORT



Meghana . S  
I<sup>st</sup> Sem MBA  
Spartanz

Don Bosco Institute of Management Studies and  
Computer Application

Kumbalgodu, Mysore road, Bangalore-74

Department of Commerce and Management  
Industrial visit for the A.Y 2022-23



Industry : Mysore Sandal Soap  
Factory  
17, Yashwanthpur Industrial  
Suburb, Yashwanthpur,  
Bangalore, Karnataka 560086

Date : 06/04/2022

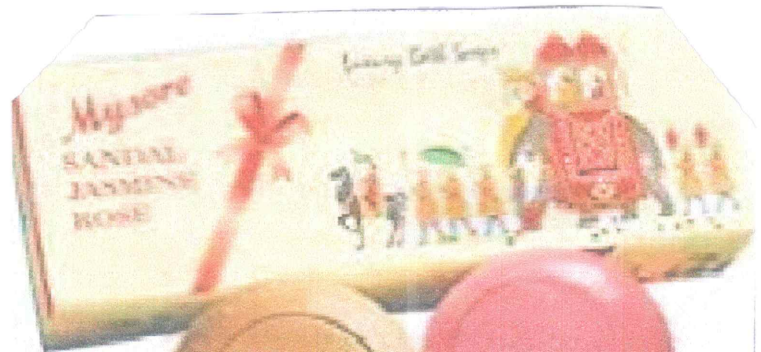


## Introduction:

The industrial visit for the department of Commerce and management students commenced on 06<sup>th</sup> April 2022 by 12:30pm from college campus to have practical exposure of industry and visited Karnataka Soaps and Detergents limited (KSDL) is an Indian company, owned by the government of Karnataka in India. we left college at 11:30 am and travelled by college bus.



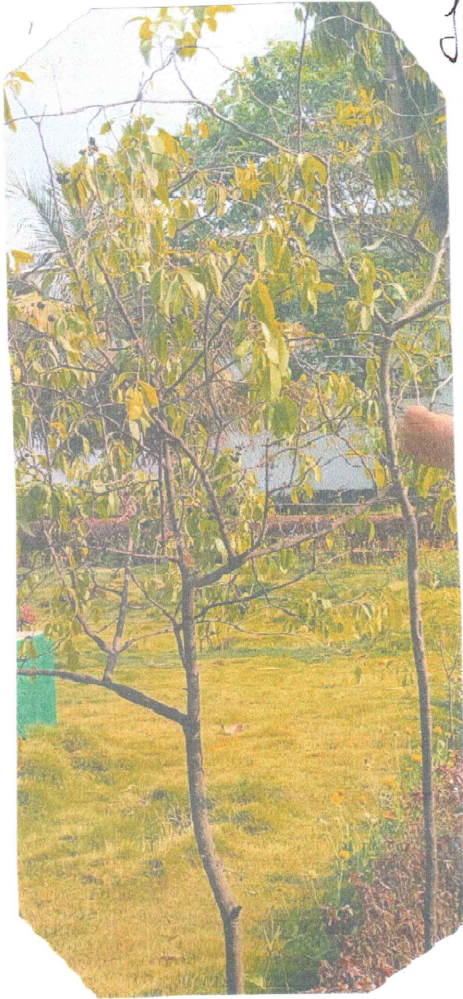
to yeshwanthpur industrial. we visited to Iskcon temple and took Darshna of Lord Krishna and later we had a meal (prasadam) and left Iskcon Temple at 2:00 pm. and we reached Mysore sandal soap factory by walking 1.6km at 2:30pm.



Industrial visit of Karnataka Soaps and Detergents factory - IIBS.

Mr. Bala Krishna the Pro and R & D

head of the factory explained the uniqueness of the factory and process involved in the production of soap. we were shown the sandalwood trees and were told the legalities involved in possessing these plants at an individual

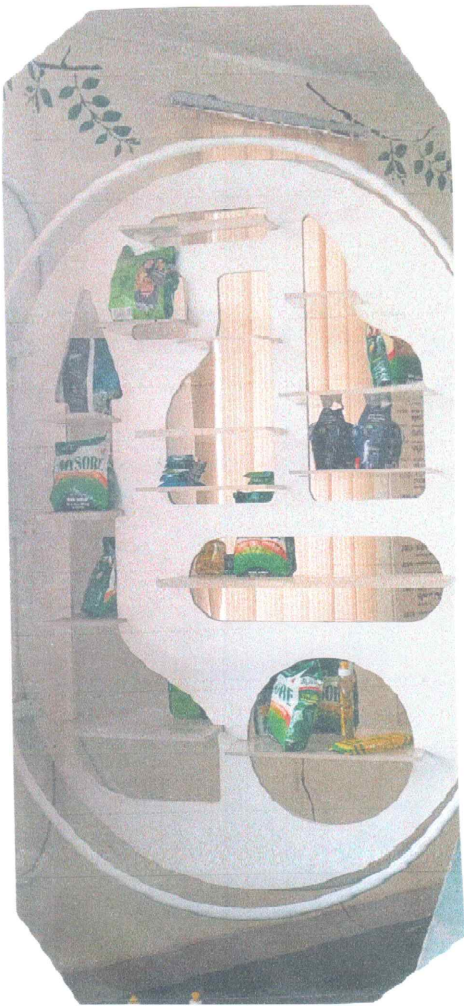
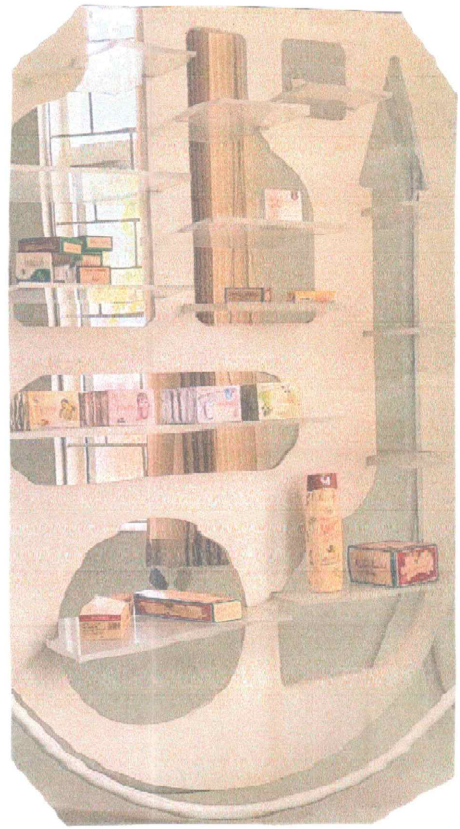


farm or garden. Then, we entered the factory where it imports the primary raw materials palm oil, required from the manufacture of the soaps from Malaysia.

The factory procedure consisted of 3 stages - preparation, conversion, and the finishing product. Initially, the soap is in the liquid state which is then converted into a solid soap with added fragrance and finally packaging by collecting the soap and then putting a cover on the soap with the logo and brand name placed.

Mysore Sandal Soap is a brand of soap manufactured by the Karnataka Soaps and Detergents Limited (KSDL), a company owned by the government of Karnataka in India. This soap has been manufactured since 1916. When Krishna Raja Wodeyar IV, the king of Mysore, set up the Government Soap factory in Bangalore. In 1980, KSDL was incorporated as a company by merging the government soap factory with the sandalwood oil factories of Shimoga and Mysore. Mysore sandal soap is the only soap in the world made from 100% pure sandalwood oil.





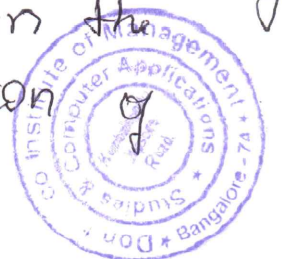


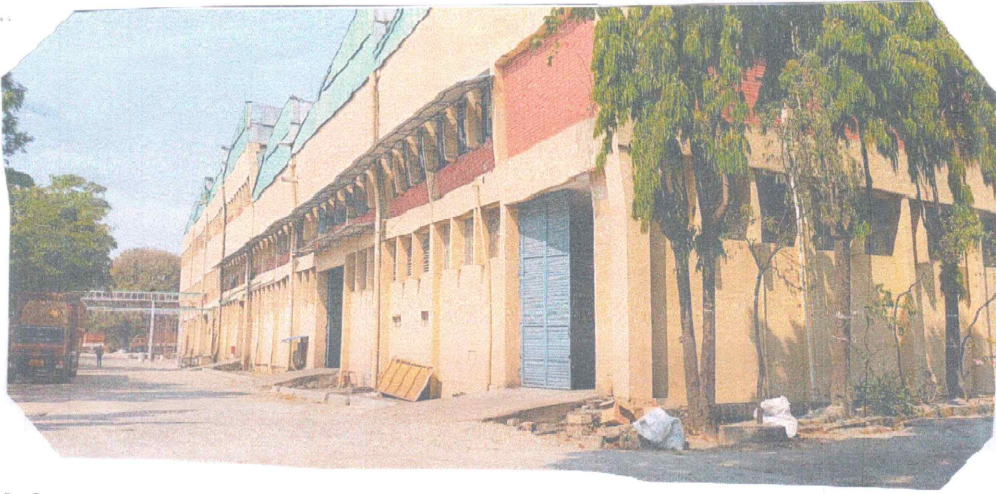
History: In the early 20<sup>th</sup> century, the Mysore Kingdom in India was one of the largest producers of sandalwood in the world. It was also one of the major exporters of the world. This factory, which was set up in 1916, started manufacturing soaps under the brand name Mysore Sandal Soap using sandalwood oil as the main ingredient. The company celebrated its centennial on 10 May 2016.



It planned a celebration to commemorate the year, and included plan to introduce a Mysore Sandal Centennial Soap to mark the occasion. Karnataka Soaps had an event on 10 May 2016 to commemorate the 100<sup>th</sup> year.

The makers of Mysore Sandal Soap launched on 11 November 2017, a new basket of soaps with brand name Mysore Soap in variants of rose milk cream, Jasmine milk cream, Orange lime, Cologne lavender, and Fruity floral. Each variety is exclusively packaged depicting ethnic Indian woman in traditional looks. The soap weights 100g. On a guided tour of this factory, you will see the various stages involved in the extraction of sandalwood oil and preparation of varied products using it.





## Manufacturing of Mysore Sandal Soap (Process)

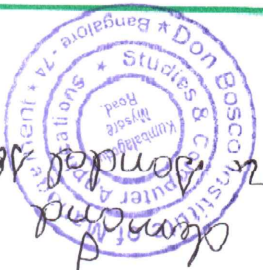
Mysore Sandal  
Soap factory

Manufactures soaps and detergents. whose machines installed in 1916 are used even today which efficiently delivers the required products to consumers and he also explained us that about new technology going to involved while production and packing the soaps. Thus we got to know its uniqueness and its brand all around the world. He also told us that the factory is situated over 40 acres of government land.



As we learned many things such as packing and efficient working of all departments, and co-ordination which is the most important skill to achieve goals.





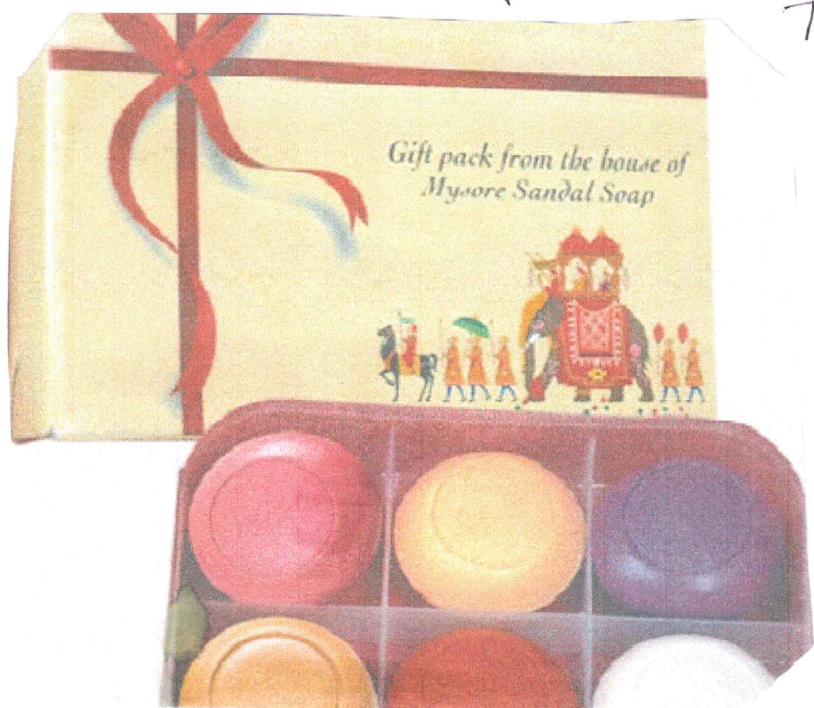
For the year 2017-18, KSDL supported a turnover of Rs 583 crore and increased it further to Rs 624 crore in 2018-19, a growth of 15.31% year-on-year. The net profit of the company almost doubled from Rs 67 crore in the year 2017-18 to around Rs 133 crore in a month in 2019, a growth of 83.5% over the previous year. From the past 25 years KSDL has been reporting its products all over the world due to its excellent quality and the uniqueness of Sandalwood. On its demand prevailing in the international market: Mysore Sandal Soap 75 Gms, 150 Gms, 18 Gms.



- Objectives of KSDL
- To serve the national economy.
  - To obtain self-reliance.
  - To promote purity and quality products.
  - To promote purity and quality products.
  - To serve the national economy.
  - To obtain self-reliance.
  - To promote purity and quality products.
  - To promote purity and quality products.
- Profits and Sales of KSDL

- Mission:
- To serve the national economy.
  - To obtain self-reliance.
  - To promote purity and quality products.
  - To maintain the brand legacy of its customers.
  - To build upon the reputation of Mysore Sandal Soap based on pure sandal oil.

Policy: Corporate social responsibility policy of KSPDL  
With the enactment of new companies act, 2013 and  
the rules framed there under by the central government  
during February, 2014 the mandatory provisions of the  
Corporate social responsibility (CSR) policy have been  
formally introduced for its adherence by all the Indian  
companies which fulfills the criteria as envisaged  
under section 135 of the companies act, 2013.



The ministry of corporate affairs has also issued guidelines indicating various activities to be undertaken by a company under CSR - vide notification no. 1/15/2013 - CL-V dated : 27/2/14 which shall come into force. 01/4/2014. In this background, it is necessary to respond to this system measure undertaken by the Government.





## Conclusion

Mysore Sandal soap it works for normal healthy skin, as it is without harsh synthetic compounds. It likewise encourages extra ordinarily to improve the appearance and fills in as a germicide. Also, it treats skin disturbances and keeps the skin smooth and pimples free. And it is a pure and natural sandal-wood oil and saffron cleanses the skin from impurities thus enhancing your skin tone by giving it a natural and fair glow.



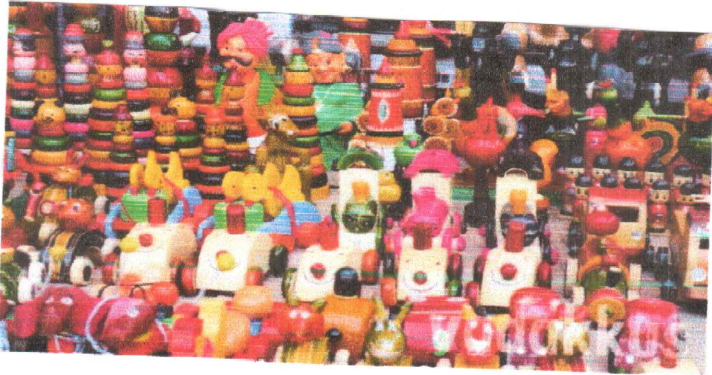
# Channapatna Toy Factory Industrial Visit Report



Prepared By  
Abhishek Pandey (1<sup>st</sup> Year MBA)  
Don Bosco Institute of Management Studies  
& Computer Application  
(28-3-2022)



# History of Channapatna toys



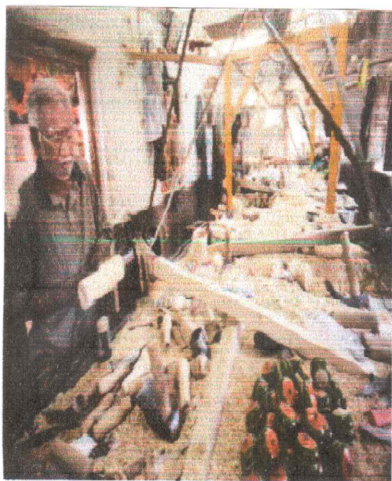
The origin of the channapatna toys can be traced back to the times of Tipu Sultan, the historic ruler of Mysore. Tipu Sultan was the founder of Channapatna toys; he invited Persians to train local artisans. It is known that Tipu Sultan was an ardent admirer of arts, and in particular of woodwork. Thus, he provided royal patronage to wooden artists and invited wood workers all the way from Persia to explore the woodwork in India and expose the Indian artists to more innovative forms of woodwork. The art underwent dramatic changes over



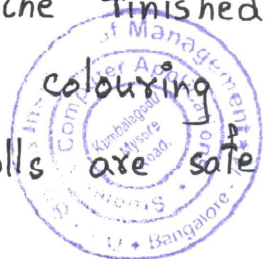
3

the years. Later, a man by the name of "Bavas Miyan" undertook the responsibility to introduce Japanese doll making techniques to improve production and reduce the effort that went into making each piece of toy. For nearly two centuries, ivory-wood was the main wood used in the making of these toys, though rosewood and sandalwood were also occasionally used.

## Manufacturing



The craft has diversified over time; in addition to the traditional ivory-wood, other woods - including rubber, sycamore, cedar, pine and teak - are now used as well. Manufacturing stages include procuring the wood, seasoning the wood, cutting the wood into desired shapes, pruning and carving the toys, applying the colours and finally polishing the finished product. Vegetable dyes are used in the colouring process to ensure that the toys and dolls are safe.





for use by children.

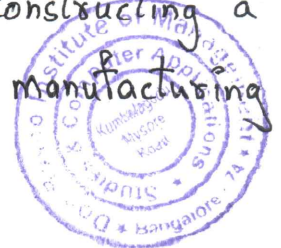
The "Karnataka Handicrafts Development Corporation (KHDC) provides assistance with marketing efforts. The oldest and most popular manufacturing unit Bharath



Ast and craft help develop innovative products.

## Growth

With no proper back up or marketing, the channapatna toy industry faced a financial crunch for more than a decade and was almost on the verge of dying out. However, with the help of KHDC, the craft has been revived and the artisans involved are being trained on changing trends in the industry, to help them keep abreast of the current scenario. Prototypes designed by master craftsmen are introduced to the local artisans, who use them to create well-designed toys and dolls. The Government of Karnataka has also provided help by constructing a Lacquerware craft complex, which has a manufacturing



Center with 32 turning lathe machines.

Many new companies and social enterprises have been reviving the channapatna craft to suit modern tastes.



# Report



On 28 March '2022, We, the 1<sup>st</sup> Year MBA 'Titanz' students were taken on an industrial visit to Channapatna - famous for its toy industry. Prof Champa. T and Prof Moulieswaran. D accompanied us on this trip.

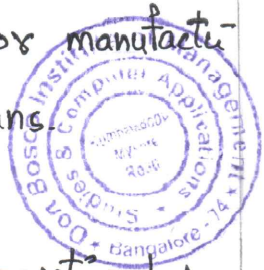
We set out for Channapatna craft park, on the outskirts of Bengaluru at 9:30 am. We reached craft park at around 11 am.

Government has given 14 acres of land to the entrepreneurs to set up this industrial estate. We were taken to Shilpa trust in the craft park. This trust makes products such as toys, decorative show pieces as well as gift items, all made of



wood. They produce around 8,500 varieties of such items. The Production Manager said that from the past 30-40 years they are in export activities, but in

last few years they have entered into domestic market. They use indigenous technologies for manufacturing, but all crafted by the local artisans.



Channapatna toys are a particular form of wooden toys and doll that are manufactured in the town of Channapatna in the Ramanagara district of Karnataka state, India.

This traditional craft is protected as geographical indication (GI)



8

under the World Trade Organization, administered by the Government of Karnataka. As a result of the popularity of these toys, Channarayana is known as the Gombegala Oosu (toy-town) of Karnataka. Traditionally,

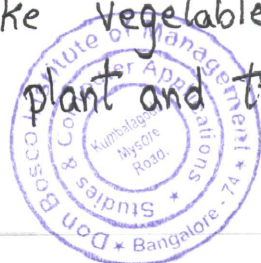
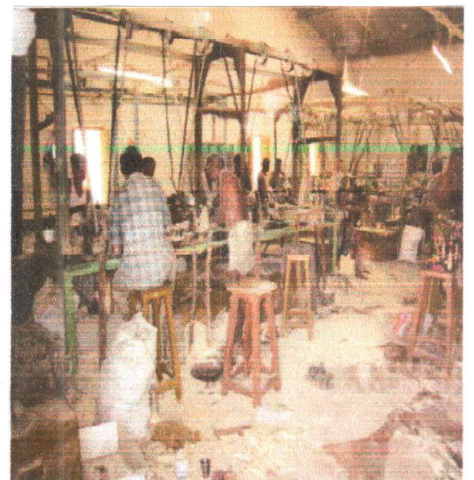


the work involved lacquering the wood of the Wrightia tinctoria tree, colloquially called Aale mara (ivory-wood).

In order to produce a final product, wood pieces have to go through various process. The first process is

cutting barks of the wood and making it ready for the next process which also acts as an input for the next process or step. In the second step, shape is given to the wood piece. In the subsequent step colouring is done. It's amazing, the way the natural colours are made.

The colour is made from the wax which is essentially a combination of plant roots and organic wastes like vegetables, fruits and leaves of plant and trees



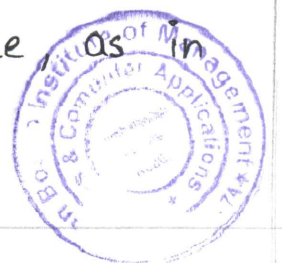


The colouring wax is placed on the wood piece and when the machine starts running over it, a friction is caused that melts the colours which in turn colours the wood. The next stage is lustouring (shining). Palm leaf is used at this stage to give a smooth finish to the product. In the last stage the pieces are all attached together.

The artisans in the toy village are not educated but are skilled and accomplished craftsmen. It's the skill that enables them to open these types of units. Shilpa Trust has employed around 85-100 employees who have around 20-35 years of experience in this field. Due to Covid the employees at factory were sedused, but now they are slowly getting back.



We returned at around 4 pm. The trip was fabulous and a great learning experience.



the 1<sup>st</sup> Semester, we got to learn about small industries and industrial estates and they



working environment and how this artisans are working to promote and teach this skills to others and save this culture from going extent or forgotten.

Thus, the visit had a value-added learning method; wherein, we could apply our classroom learning to the real-life situation of the industry environment and competition in the market which is faced by the small factories, like Channapatna toy factory. It provides us an exposure to the practical working environment and an awareness about the industrial practices.



- Abhishek Pandey





**DON BOSCO INSTITUTE OF MANAGEMENT STUDIES  
AND COMPUTER APPLICATIONS**  
Kumbalgodu, Bangalore - 560074



An Industrial visit to Channapatna craft park -famous for its toy industry conducted on 22/02/2022, the details are as follows:

Participants: All the students of BBA

No of students: 55

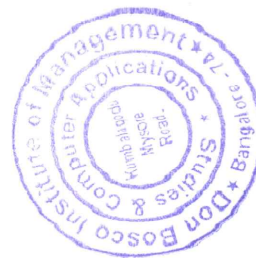
Organised by: Department of Commerce and Management of DBIMSCA

**Faculty members:**

Subha	Asst professor of Commerce and Management, DBIMSCA
Mamatha.p	Asst professor of Commerce and Management, DBIMSCA
Yashaswi .H.R	Asst professor of Commerce and Management, DBIMSCA
Sushmitha. R	Asst professor of Commerce and Management, DBIMSCA
Sahana.g	Asst professor of Commerce and Management, DBIMSCA

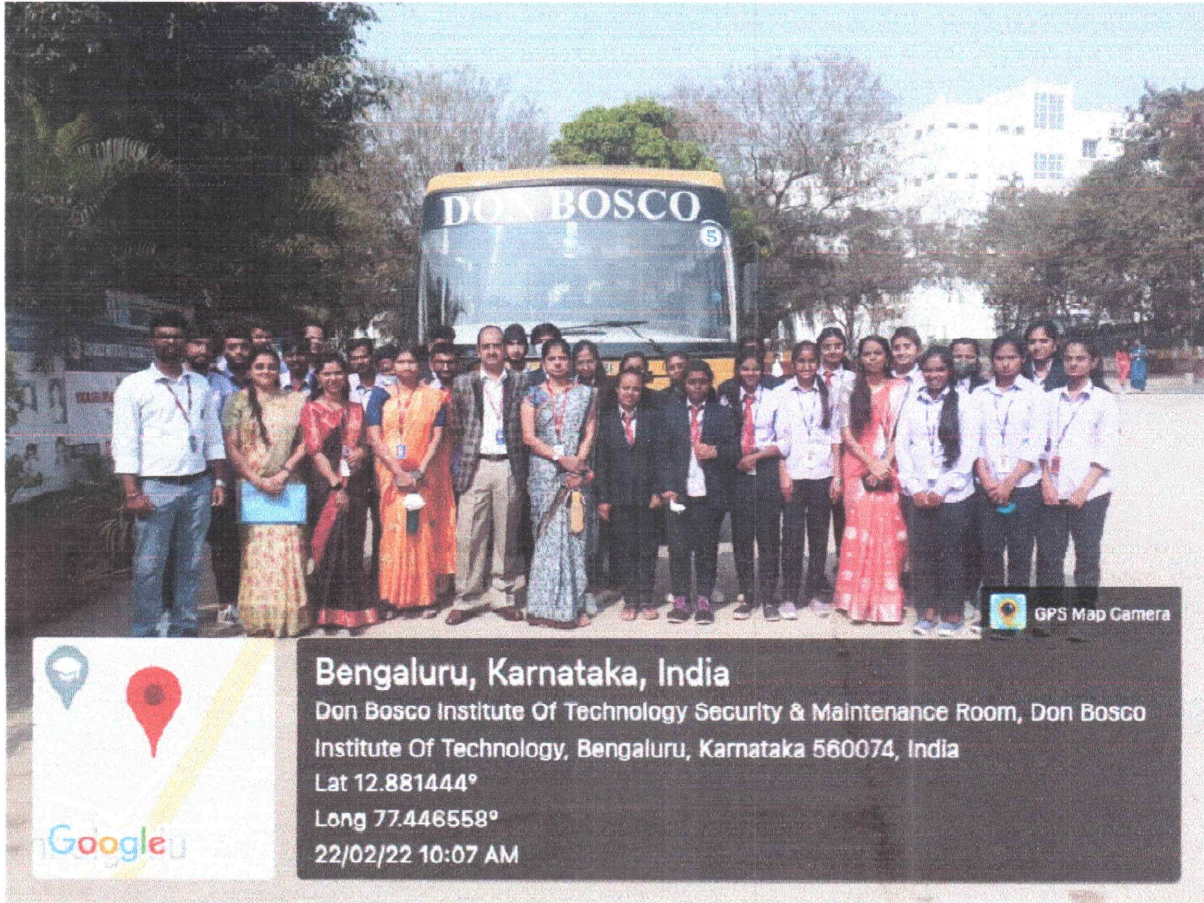
**Timing:** 10.00 to 3.30PM

**Transportation:** College Bus





Ms. sushmitha Asst.professor of Commerce and Management has contacted the Assistant General Manager of chanpatna craft park shanthaiah through his mail id and obtained the permission for industrial visit.



The BBA students were taken to the chanpatna craft park on 22<sup>nd</sup> February 2022. The bus departed from the college campus at 10.00am and reached the factory premises at 11.00 am. Asst.Prof Subha, HOD of Department of Commerce and Management and other 4 faculties accompanied the students.

Industrial visits help college students gain hands-on experience and bridge the gap between theoretical training and practical learning in a real-life environment. Students observe and learn how the theoretical management concepts are put into action. The visits are a complete package with an aim of holistic learning and widening of knowledge.

On 22 February 2022, we, the BBA students were taken on an industrial visit to Channapatna -famous for its toy industry. Asst. Prof Subha, HOD of Department of Commerce and Management and other 4 faculties accompanied the students.



We set out for Channapatna Craft Park, on the outskirts of Bengaluru at 11 am. Government has given 14 acres of land to the entrepreneurs to set up this industrial estate. We were taken to Shilpa Trust in the craft park. This trust makes products such as toys, decorative show pieces as well as gift items, all made of wood. It seems they produce 8500 varieties of such items. Mr. Shantaiah, the Manager said that from the past thirty years they are into export activities but in the last three years they have ventured into domestic market. They use indigenous technologies for manufacturing, but all crafted by the local artisans.

In order to produce a final product, wood pieces have to go through various processes. The first process is cutting barks of the wood and making it ready for the next process which also acts as an input for the next step. In the second step, shape is given to the wood pieces. In the subsequent step colouring is done. What's amazing, is the way the natural colours are made! The colour is made from the wax which is essentially a combination of plant roots and insect wastes. The colouring wax is placed on the wood piece and when the machine starts running over it, a friction is caused that melts the colours which in turn colours the wood. The next stage is lustouring [shining]. Palm leaf is used at this stage to give a smooth finish to the product. In the last stage the pieces are all attached together.

The artisans in the toy village are not educated but are skilled and accomplished craftsmen. It's the skill that enables them to open these types of units. Shilpa Trust has employed around 65-85 employees who have around 20-25 years of experience in this field.

We returned at 3 pm. The trip was fabulous and a great learning experience. The visit had a value-added learning method; wherein, we could apply our classroom learning to the real-life situation. It also provided us an exposure to the practical working environment and an awareness about the industrial practices.

#### **OBJECTIVES OF THE VISIT:**

- In order to learn the manufacturing process of toys.
- To enhance the concept of entrepreneurship in the minds of the students.
- To get practical exposure in real world.
- To prepare an industrial report as per the guidelines given by Bangalore university

#### **COMPANY INTRODUCTION:**

Channapatna Crafts Park is India's first crafts park and is located at Channapatna in Karnataka, South India. Channapatna is a crafts cluster of over 3000 traditional artisans engaged in the production of lacquerware. The Park was established to help preserve, nurture and grow their skills by providing them with employment



opportunities. This has been done through the provision of infrastructure and manufacturing facilities to exporters engaged in the production of wood craft lacquerware and natural fibre products synonymous with the region. The infrastructure and facilities of the Park are also available to Architects, Designers and Companies for crafting and manufacturing of wooden products and lacquerware.

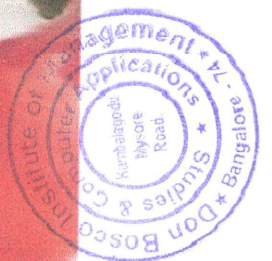
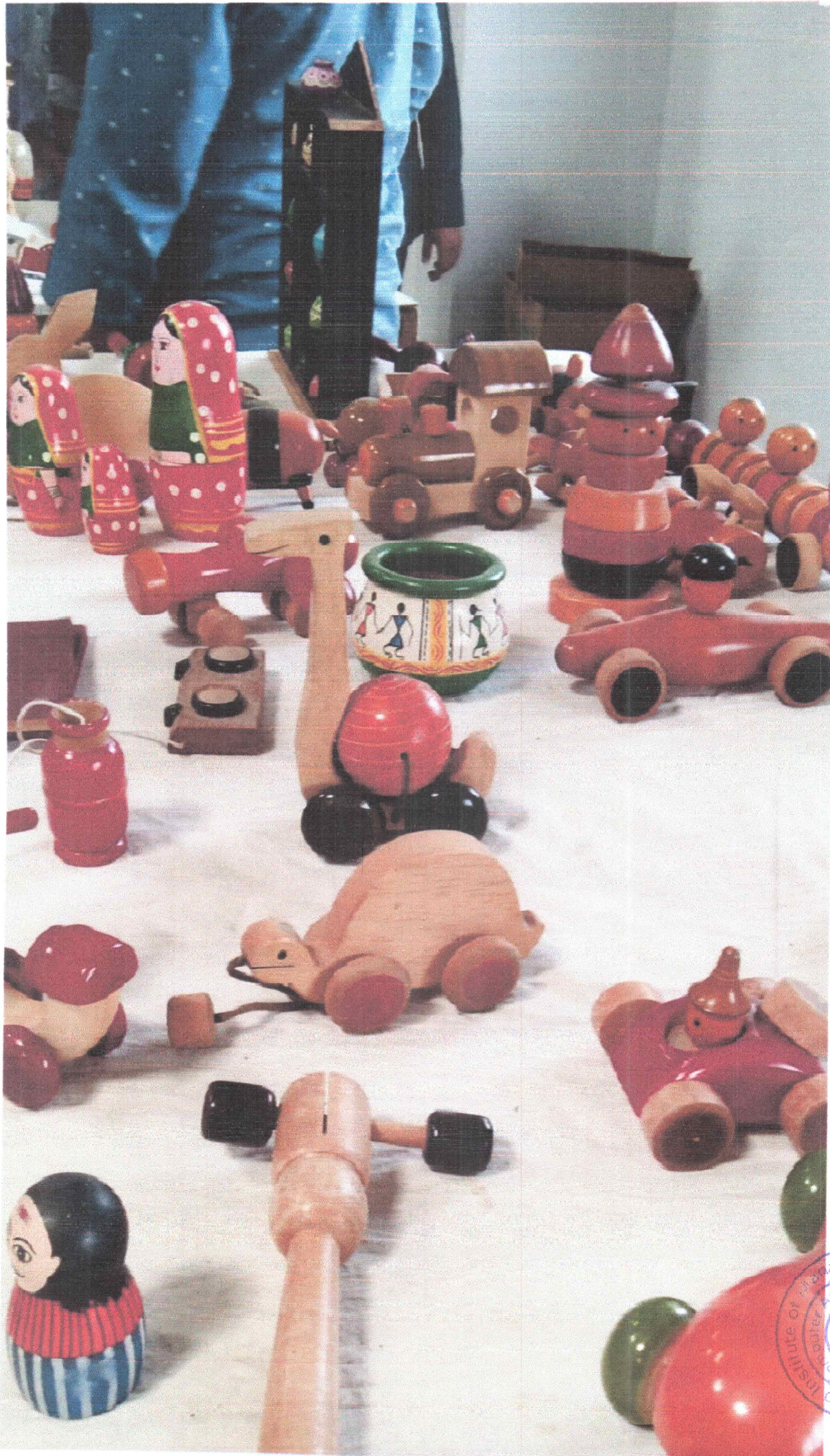
Spread over 14 acres of land, the Park has a sophisticated Common Facility Service Centre with state-of-the-art wood working machines. Also being set up is a Common Facility Service Centre for natural fibre. Manufacturer-Exporters are establishing their individual manufacturing centers within the Park. The companies currently operating within the Park are: Alpha Designer Cane

- Ajmal Handicrafts
- Ashrafi Fashions
- Bharat Arts & Crafts
- Chromacrafts International
- Industree Crafts Pvt. Ltd.
- Kushala Kala
- MAYA Organic Ltd.
- N.Ranga Rao & Sons
- Reliable Woodcraft
- Shilpa Trust
- Sri.Beereshwara Arts & Crafts
- T.P.Arts & Crafts

These companies are engaged in the production of fashion accessories, corporate gifts, kitchen accessories, lifestyle products, wooden furniture, toys & dolls, educational equipments, accessories for perfumed products, natural fibre products, cane & bamboo articles and furniture.

Channapatna Crafts Park is a registered society with representation from the Department of Industries & Commerce, Government of Karnataka, Karnataka State Small Industries Development Corporation Limited, Export Promotion Council for Handicrafts, Karnataka State Handicrafts Development Corporation Limited and six manufacturer exporters.





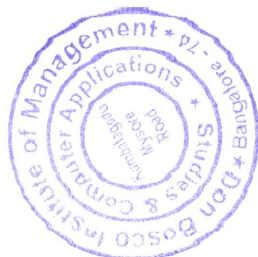


The visit was very fruitful to the students. The students and the faculty members have understood the concept of manufacturing process of toys and all the students and faculties have gathered at outside the firm and took snap with the guide. We started about 2.30PM from the college bus and the visit ended at our DBIMSCA college campus at 3.30 PM.

*Suhani*  
*Manaha*  
 20/2/22  
 CO-ORDINATORS

*[Signature]*  
 HOD

*[Signature]*  
 PRINCIPAL



Principal  
 Don Bosco Institute of Management  
 Studies & Computer Applications  
 Kumbalagodu, Mysore Road,  
 Bangalore - 560 074.

# Fwd: Requesting permission for Industrial Visit

Inbox

sush11sushmitha2020 <[sush11sushmitha2020@gmail.com](mailto:sush11sushmitha2020@gmail.com)> Mon, Feb

21, 11:04

AM

to me

Sent from vivo smartphone

----- Forwarded -----

Sender: sush11sushmitha2020 <[sush11sushmitha2020@gmail.com](mailto:sush11sushmitha2020@gmail.com)>

Date: Feb 17, 2022 4:08 PM

Subject: Requesting permission for Industrial Visit

Recipient: channapatnacraftspark <[channapatnacraftspark@gmail.com](mailto:channapatnacraftspark@gmail.com)>

CC:

Our College (Don Bosco Institute of Management studies and Computer Applications is expected to visit your Industry for Academic Purpose on 22/02/2022 at 10 AM. So we request you to grant permission to visit your esteemed industry.

No. of Students :- 80

No. of Faculties :- 05

[ We will come by KSRTC bus from Kumbalgodu to Channapatna and from Channapatna to your industry by walk]

Your Positive social response in this regard will be highly solicited, waiting with anticipation.

Thanks and Regards

Sushmitha R

Assistant Professor

Department of Commerce

Don Bosco institute of Management studies and computer Applications

Kumbalgodu, Mysore Road

Bangalore South - [560074](https://www.google.com/maps/place/560074)





channapatnacraftspark

To Me.cjfc.ccp@gmail.com

Feb 21, 2022, 2:46 PM Details



## CHANNAPATNA CRAFTS PARK

Dear Sushmita,

We are indeed sorry for the late reply. You are welcome to bring your students. Please keep in touch with Sri Shanthiah, our Manager on [9036661907](tel:9036661907).

regards,

Sreekala Kadidal

Channapatna Crafts Park  
Sathanur Road, Tagachagere  
Ramanagara District  
Phone: [9901042048](tel:9901042048)

On Thu, Feb 17, 2022 at 2:38 AM sush11sushmita2020  
[sush11sushmita2020@gmail.com](mailto:sush11sushmita2020@gmail.com) wrote:





# DON BOSCO INSTITUTE OF MANAGEMENT STUDIES AND COMPUTER APPLICATIONS

Kumbalagodu, Bangalore, Karnataka - 560074



An Industrial visit to Mysore sandal soap Limited was conducted on 18/02/2022, the details are as follows:

Participants: second year BBA students

No of students: 25

Organised by: Department of Commerce and Management of DBIMSCA

### Faculty members:

Subha R	Asst professor of Commerce and Management, DBIMSCA
Mamatha.P	Asst professor of Commerce and Management, DBIMSCA
Yashaswi .H.R	Asst professor of Commerce and Management, DBIMSCA
Sushmitha. R	Asst professor of Commerce and Management, DBIMSCA

Timing: 1.30 to 3.30PM

Transportation: College Bus





Mr. Mamatha Asst.professor of Commerce and Management has contacted the Assistant General Manager of Mysore sandal soap industry Laxman L D through his mail id and obtained the permission for industrial visit.



The Second year BBA students were taken to the Karnataka Soaps and Detergents Limited [KSDL] on 18<sup>th</sup> February 2022. The bus departed from the college campus at 1.30 pm and reached the factory premises at 2.30 pm. Asst.Prof Subha, HOD of Department of Commerce and Management and other 4 faculties accompanied the students.

The aim of the industrial visit is to go beyond academics, as an industrial visit provides students' a practical perspective of the work place and gives an opportunity to the students to learn practically through interaction, the working methods and employment practices. The undergraduates were taken to KSDL to understand the manufacturing process of the well-known soap- the Mysore Sandal soap. This soap belongs to one of those products that every household in India has either used it or heard of it irrespective of one's standard of living.



The students were explained and shown an AV on the history of this magnificent company. The then king of Mysore, Krishna Raj Wadiyar IV set up the factory at Bangalore and it is now under the Government of Karnataka. Apparently, the excess of sandalwood reserves gave way to these products. Now, the growth of sandalwood trees is highly encouraged and the company has taken many steps to get people to grow sandalwood saplings in their farms, estates and gardens.

Mr. Balasubramanyam (employee of KSDL) also explained that this soap is the only soap in the world that is made of 100% pure sandalwood oil. The students were aghast to know the product line of the company that ranges from products like soaps, detergents, handwash to powder, incense sticks, perfumes and more. They also have a wide range of soaps that costs upto Rs. 800. He also spoke about the process of making the soap and the students were shown the process too. This gave them an understanding of one of the familiar brands that originated in Karnataka. Mr. Balasubramanyam had created a very friendly and positive learning environment at KSDL.

The students were thankful to the college for providing them a glimpse of the actual working environment and the valuable knowledge that they had received at KSDL

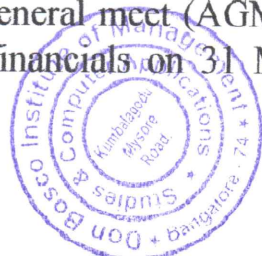
#### **OBJECTIVES OF THE VISIT:**

- In order to learn the manufacturing process.
- To enhance the concept of entrepreneurship in the minds of the students.
- To get practical exposure in real world.
- To prepare an industrial report as per the guidelines given by Bangalore university

#### **COMPANY INTRODUCTION:**

Karnataka Soaps AND Detergents Limited is a State Govt company, incorporated on 09 Jul, 1980. It's a public unlisted company and is classified as 'company limited by shares'.

Company's authorized capital stands at Rs 3500.0 lakhs and has 90.92028% paid-up capital which is Rs 3182.21 lakhs. Karnataka Soaps AND Detergents Limited last annual general meet (AGM) happened on 27 Sep, 2017. The company last updated its financials on 31 Mar, 2017 as per Ministry of Corporate Affairs (MCA).



Karnataka Soaps AND Detergents Limited is majorly in Community, personal & Social Services business from last 42 years and currently, company operations are active. Current board members & directors are SRINIVASAN CHANDRASEKARAN, AHAMMED SHAMLA, KOLLA SRISAIBABA, GOWDA SIDDAPPA KARIYAPPA, MITHILESHWAR JHA, GEORGE KELACHANDRA JOSEPH, HARI KUMAR JHA and PRAKASH GADARE CHANNIGARAYAPPA

Company is registered in Bangalore (Karnataka) Registrar Office. Karnataka Soaps AND Detergents Limited registered address is P.B.5531 POONA HIGHWAYBANGALORE BANGALORE KA 560055 IN.





ALAKSHMI  
LAYOUT  
Google

**Bengaluru, Karnataka, India**  
 Metro Station Sandal Soap Factory, Chord Rd, Veshwanthpur Industrial  
 SUBURB, Mahalakshmi Layout, Bengaluru, Karnataka 560088, India  
 Lat 13.014968°  
 Long 77.562829°  
 18/02/22 03:00 PM

GPS Max Camera



ALAKSHMI  
LAYOUT  
Google

**Bengaluru, Karnataka, India**  
 Metro Station Sandal Soap Factory, Chord Rd, Veshwanthpur Industrial  
 Suburb, Mahalakshmi Layout, Bengaluru, Karnataka 560088, India  
 Lat 13.015011°  
 Long 77.562919°  
 18/02/22 02:20 PM

GPS Map Camera



Don Bosco Institute of Management & Technology  
 Computer Applications  
 Bangalore  
 Mysore  
 India

Mali  
Nigeria  
Google

**Bengaluru, Karnataka, India**  
 Don Bosco Institute Of Technology Security & Maintenance Room, Don  
 Bosco Institute Of Technology, Bengaluru, Karnataka 560074, India  
 Lat 12.981412°  
 Long 77.446432°  
 18/02/22 02:17 PM

GPS Map Camera



The visit was very fruitful to the students. The students and the faculty members have understood the concept of manufacturing process and all the students and faculties have gathered at outside the firm and took snap with the guide. We started about 3.30PM from the college bus and the visit ended at our DBIMSCA college campus at 4.30 PM.

*Afsha*  
*Subhmita R*  
 CO-ORDINATORS 23/02/22

*Vinayaka.T*  
 HOD

*Principals*  
 PRINCIPAL  
 Don Bosco Institute of Management  
 Studies & Computer Applications  
 Kumbalagodu, Mysore Road,  
 Bangalore - 560 074.

Subject: Seeking permission for Industrial Visit to your esteemed organization Add label



mamatha Shivanada 9 Feb  
to Idlaxman.banjara ✓



DON BOSCO INSTITUTE OF MANAGEMENT STUDIES AND COMPUTER APPLICATIONS one of the premium institutes affiliated to Bangalore university. As per our curriculum management students are expected to visit prominent industries and companies for the practical exposure and insights to the real working environment. so we request you to grant permission to visit your esteemed organization. **No of Visitors** :25 students along with 4 faculty members. **Date** : according to industry convenience ( february 3rd week possible). Request you to kindly accord Permission to Visit your esteemed organization, Your Positive Social response in this regard will be highly solicited, waiting with Anticipation.

Thanks and Regards

Mamatha.p

Assistant Professor

Department of Commerce and Management

Don Bosco Institute of management studies

and computer application

Kumbalagodu, Mysore Road

Bengaluru – 560 074, Karnataka, INDIA.

Email: [mmamatha736@gmail.com](mailto:mmamatha736@gmail.com)



Anticipation.

Thanks and Regards

Mamatha.p  
Assistant Professor  
Department of Commerce and Management  
Don Bosco Institute of management studies  
and computer application  
Kumbalagodu, Mysore Road  
Bengaluru - 560 074, Karnataka, INDIA.  
Email: [mmamatha736@gmail.com](mailto:mmamatha736@gmail.com)



PRO MYSORESANDAL 11 Feb

to me v



with reference to your requisition letter to visit our factory, hereby confirming your visit (25 students+ 4 faculties) on 18.02.2022 at 2.30 pm. Please carry a copy of this email and report at the material gate (West Gate) for taking an entry to the factory. for any clarification kindly contact Sri. Balakrishna (Company Guide) Mobile No. 9731158312.

Regards

Asst.Gen.Manager ( (Public Relations)

KARNATAKA SOAPS & DETERGENTS LTD

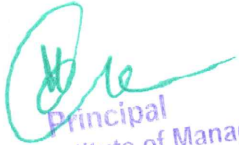
(A GOVERNMENT OF KARNATAKA UNDERTAKING)

BANGALORE

080-22164830 / 080 22164831

Show quoted text



  
Principal  
Don Bosco Institute of Management  
Studies & Computer Applications  
Kumbalagodu, Mysore Road,  
Bangalore - 560 074.